

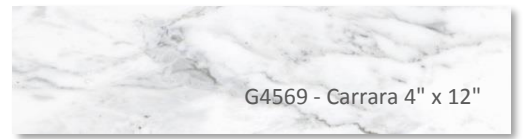
## URBAN CLASSICS WALL TILE

The Urban Classics Wall Tile Collection offers the Carrara and Onyx in a 2" x 2" Mosaic, Diamond Mosaic, 3" x 6", 4" x 12" and 8" x 24" along with coordinating bullnose.

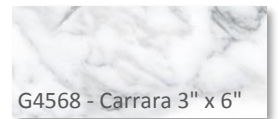
G4568 Carrara 3" x 6" on wall



G4570 - Carrara 8" x 24"



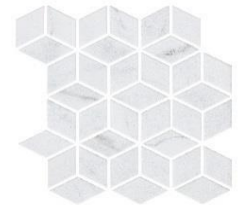
G4569 - Carrara 4" x 12"



G4568 - Carrara 3" x 6"



G4576 - Carrara 2" x 2"



G4577 - Carrara Diamond



G4573 - Onyx 8" x 24"

G4572 - Onyx 4" x 12"

G4571 - Onyx 3" x 6"



G4574 - Onyx 2" x 2"



G4575 - Onyx Diamond

G4572 4" x 12" on wall

## URBAN CLASSICS WALL TILE

### SIZES

Wall Tile

3" x 6" Wall Tile

4" x 12" Wall Tile

8" x 24" Wall Tile

2" x 2" Mosaic

Diamond Mosaic

Bullnose

3" x 6" Bullnose on 3" side

3" x 6" Bullnose on 6" side

4" x 12" Bullnose on 4" side

4" x 12" Bullnose on 12" side

8" x 24" Bullnose on 8" side

8" x 24" Bullnose on 24" side

### APPLICATIONS

	Interior			Exterior	
	Residential	Light Commercial	Commercial	Residential	Commercial
Floors/Patios					
Walls/Backsplashes	✓	✓	✓		
Countertops					
Pool Lining					

### INSTALLATION

Thickness  
5/16"

Grout Joint Recommendation  
Approx. 1/8"  
When using staggered joint installations  
overlap is not to exceed 33%

Shade Variation  
Medium

*\*Large format and rectangular wall tile require specific attention during installation. In view of ANSI and manufacturing tolerances, it is understood no more than 33% offset should be used for install.*

### TEST RESULTS

	ASTM#	Results
Water Absorption	C373	< 20.0%
Breaking Strength	C648	> 120 lbs
Scratch Hardness	MOHS	4.0 - 6.5
Chemical Resistance	C650	Resistant